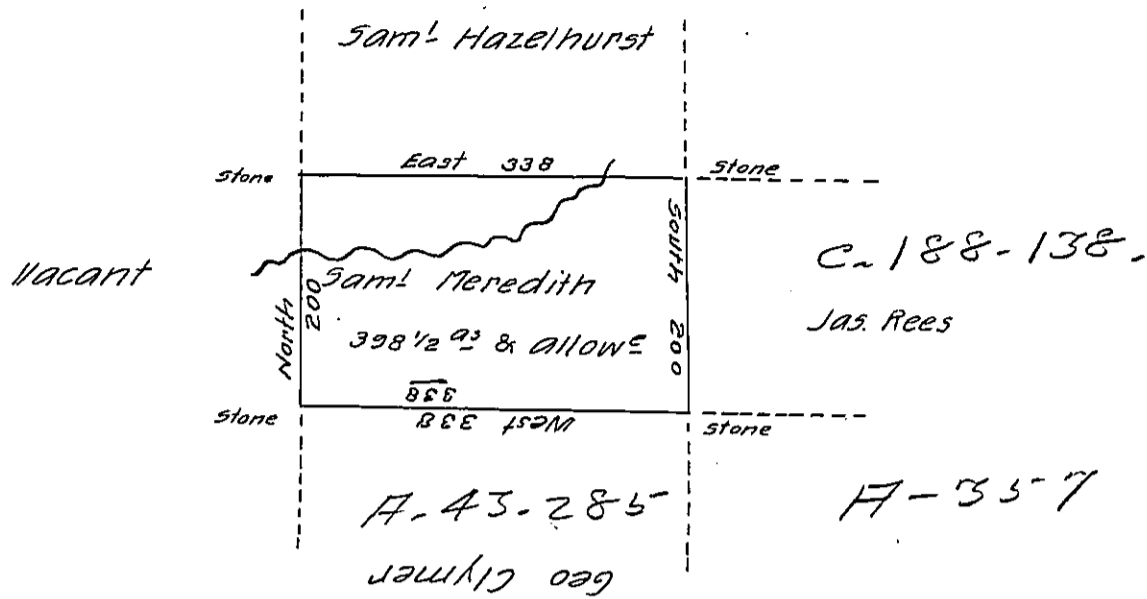


Demison-
Luzerne



A Draft of a Tract of a Tract of Land — called —
 situate on the waters of Lehi in the County of Luzerne joining
 Land surv^d for Samuel Hazelhurst. Containing three hundred
 & ninety eight acres $\frac{1}{2}$ & allowance of six p. Cent for Roads
 & c. surv^d for Samuel Meredith the 17th day of June 1792 in
 pursuance of a Warrant dated the 4th day of April 1792. by
 W^m Gray D. S.

To Daniel Brodhead Esq^r
 surv^r Gen^l

IN TESTIMONY that the above is a copy of the original remaining on file in
 the Department of Internal Affairs of Pennsylvania, made
 conformably to an Act of Assembly approved the 16th day of
 February, 1833, I have hereunto set my Hand and caused
 the Seal of said Department to be affixed at Harrisburg,
 this third day of January 1906

Joseph R. Brown
 Secretary of Internal Affairs.